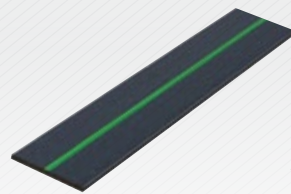


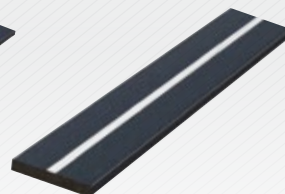


Fire Rated Frame Foam

Blue60™ is a specially formulated expanding foam that when used in conjunction with **Blue60™** fire rated packers gives up to 60 minutes fire protection to timber doorsets without the use of additional mastics or sealants.



Fire Rated Packer
1mm x 15mm
x 100mm Green



Fire Rated Packer
3mm x 15mm
x 100mm White



Fire Rated Packer
5mm x 15mm
x 100mm Blue

Key features

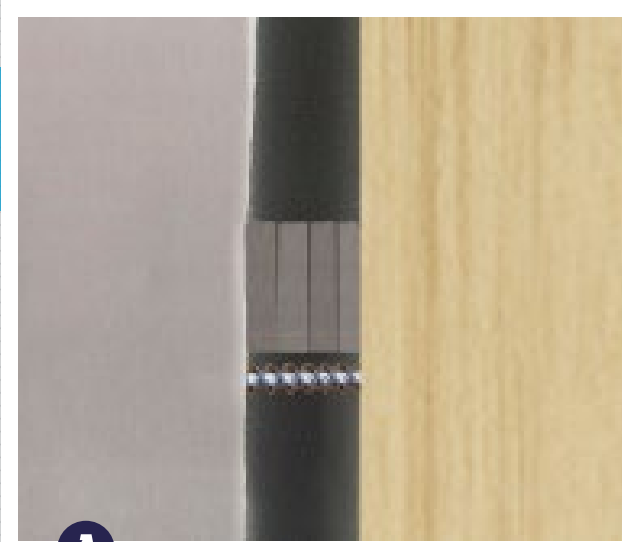
- 30 & 60 minute fire tested to BS-EN 1634-1 & BS476-22
- Test in full size single & double doorsets, not linear gaps
- No additional mastics or sealants required
- Acoustically tested to full doorset up to 43dB
- Tested in both metal and timber stud partitionings
- Tested with softwood, MDF & hardwood frame sections
- Tested with gaps between 7mm & 30mm
- Tested in a retro-fit scenario to allow use for rectification
- Blue in colour for identification purposes
- Fire rated packers must be used in conjunction with foam
- 1mm, 3mm & 5mm colour co-ordinated fire rated packers



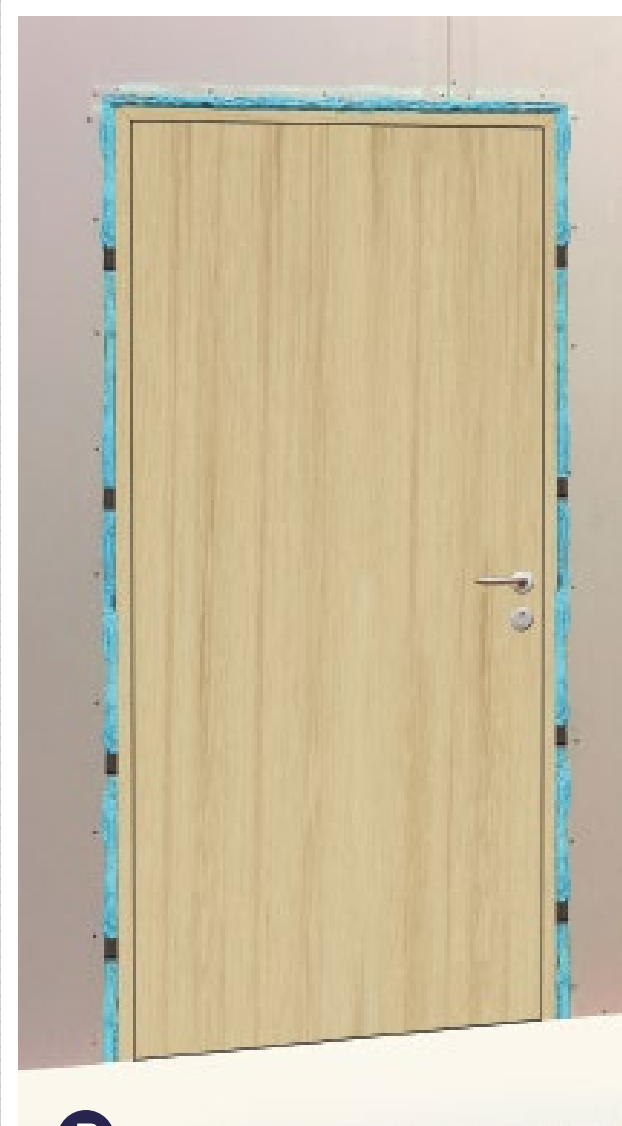
Installation Guide

The doorset installation should be in accordance with BS476-22 / BS-EN 1634-1 and manufacturers guidelines.

- During the application, the temperature of the can and room should be between +5 °C and +30 °C
- Frame / wall surface must be free from dust and grease
- Moistening the surfaces before and after the application will ensure faster curing and increase the bonding strength
- Tested with gaps between 7mm and 30mm
- Where fixing points occur pack securely using **Blue60™** fire rated packers (A)
- Screw on the applicator gun / nozzle and shake can
- Hold the can upside down and activate the foam by pressing the valve
- IMPORTANT - The junction between the door frame and the substrate should be fully filled with **Blue60™** fire rated foam (B)
- Architraves can then be fitted over un-cured foam or alternatively foam can be allowed to cure and then be removed mechanically



A



B